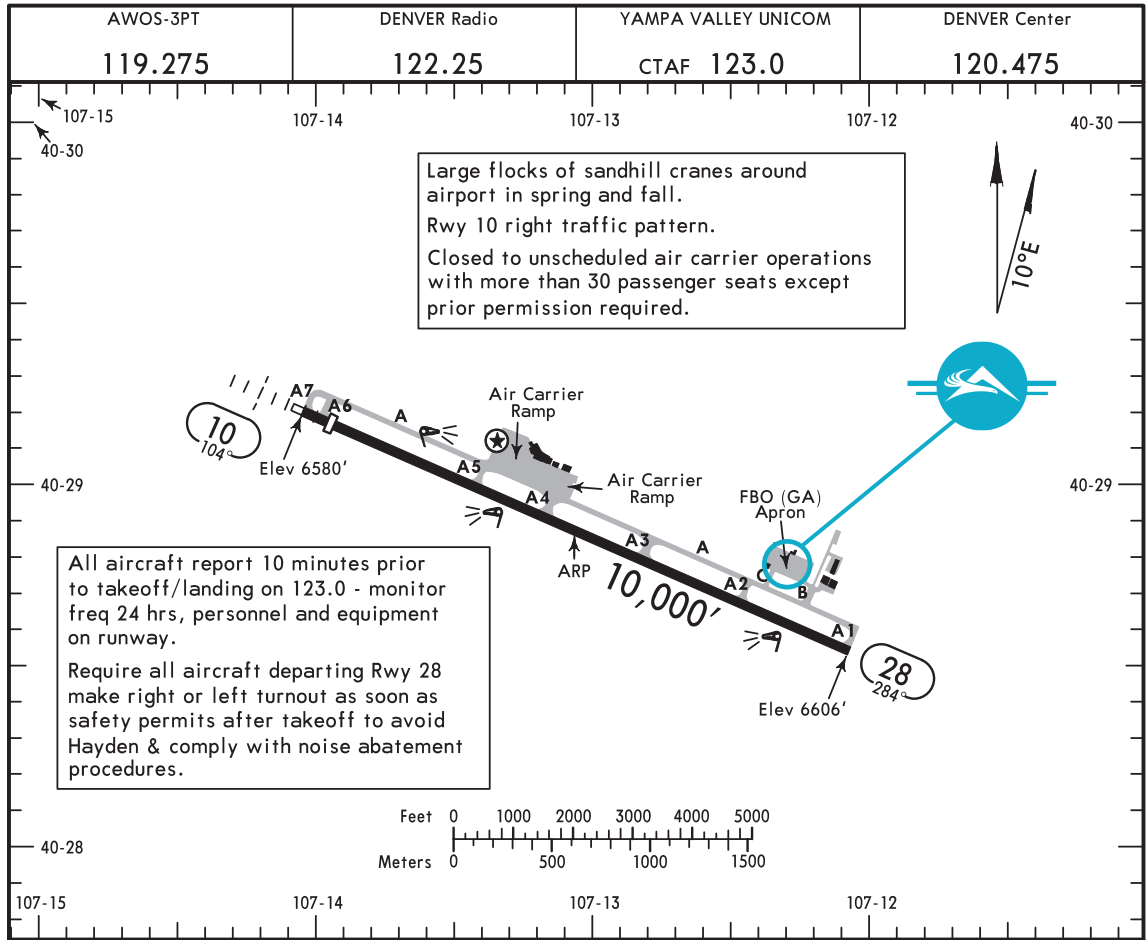


KHDN/HDN
 Apt Elev **6606'**
 N40 28.9 W107 13.1

HAYDEN, COLO
YAMPA VALLEY



ADDITIONAL RUNWAY INFORMATION

RWY		USABLE LENGTHS		TAKE-OFF	WIDTH
		Threshold	Glide Slope		
10	① HIRL ① MALSF ① PAPI-L (angle 3.0°) grooved	9490'	8516'		150'
28	① HIRL ① REIL ② PAPI-L (angle 3.5°) grooved				

- ① Activate on 123.0.
- ② PAPI does not provide obstacle clearance beyond 4 NM of threshold.

TAKE-OFF & OBSTACLE DEPARTURE PROCEDURE

	Rwy 28			Rwy 10		
	With Min climb of 245'/NM to 9500'		For Climb In Visual Conditions	With Min climb of 400'/NM to 12200'		For Climb In Visual Conditions
	Adequate Vis Ref	STD		Adequate Vis Ref	STD	
1 & 2 Eng	1/4	1	3200-3	1/4	1	3200-3
3 & 4 Eng		1/2			1/2	

OBSTACLE DP

Rwy 10; climb on heading 147° to 12200' before proceeding on course.
 Rwy 28; climb on heading 238° to 9500' before proceeding on course.
 Rwys 10 & 28; for climb in visual conditions: Cross Yampa Valley Airport at or above 9700' before proceeding on course.

FOR FILING AS ALTERNATE
 Authorized Only When Local Weather Available

	RNAV (GPS) Rwy 28	RNAV (GPS) Y Rwy 10	VOR DME-B	RNAV (RNP) Z Rwy 10	ILS or LOC Rwy 10
A	800-2	1100-2	1300-2	1400-5	NA
B					
C					
D					

CHANGES: ILS or LOC Rwy 10 alternate minimums.

A M E D 3